

Swordfish

SuperFast

A3 Laminator
For Professional Use



Scan here to
watch a helpful
hints video



Please read this manual completely before using your laminator as incorrect use can cause serious damage.

Safety Precautions

Failure to comply with any of the following safety precautions could result in serious injury, fire or electric shock.



This equipment is not intended for use by children. It is not a toy.



Unauthorised attempts at repair will invalidate the warranty.



Do not allow water, or damp media, to enter the laminator.



Do not cover the laminator, or place anything on it. Risk of fire!



Disconnect after use or when cleaning the laminator.



The laminator is hot and contains hazardous moving parts.



Do not operate the laminator on, or near, combustible objects.



Do not allow clothing or jewellery to enter the laminator. Risk of fire or electric shock!



Do not leave the laminator unattended during operation.



Do not use aerosol products on or near this machine (or any other electrical appliance) as the contents may be flammable.

SPECIFICATIONS

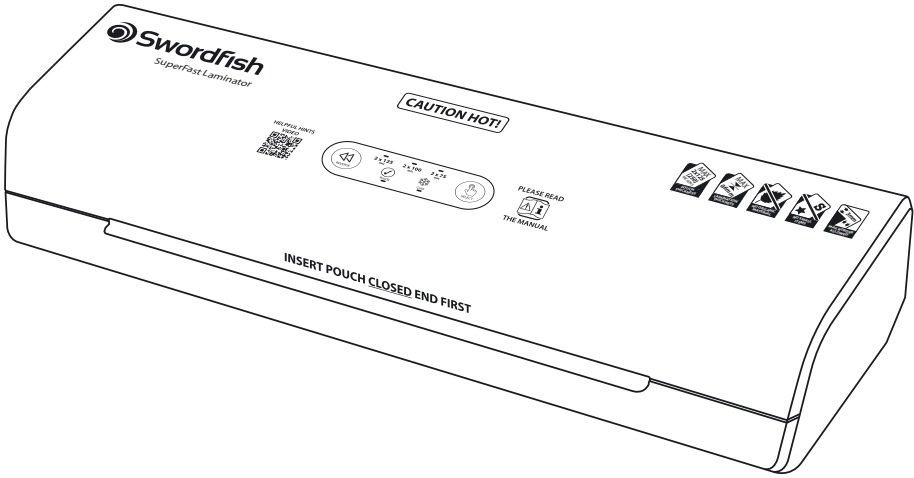
Suitability		Cold Lamination Option	✓
		Auto Shut-Off	✓
	Small Office & Office	Number of Rollers	4
What makes it special?	Swift warm-up, fast lamination	Warm-up Time	1 minute
Swordfish UK Product Code	40368	Speed (time to laminate an A4 sheet)	Approx 27 seconds
Maximum Paper Size	A3	Working Speed	800mm/minute
Colour	Black/Silver-Grey	Working Temperature	125° - 155°C
Feed Entry Width (mm)	340mm	Product Dimensions H x W x D (mm)	83 x 506 x 160
Maximum Pouch Thickness	2 x 125 [250] Microns	Weight (kg)	2.8kg
Maximum Pouch Thickness Total (mm)	0.6mm	Power	230V 60Hz
Jam Release	✓	Product Warranty (years)	2 years
Reverse Control	✓		

Product Warranty Swordfish Laminator

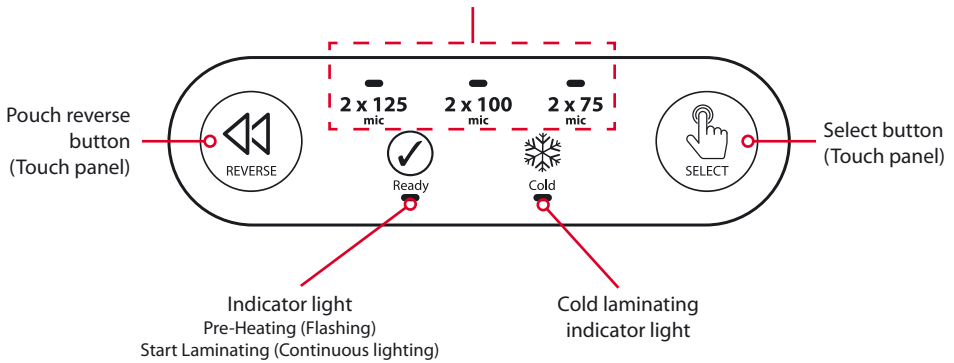
SWORDFISH 2-YEARS LIMITED WARRANTY FOR PARTS AND LABOUR

Swordfish laminators are warranted against failure or malfunction due to faulty components or workmanship for a period of two years from the date of purchase by the original consumer. Defects or failures, which have been caused by incorrect or wrongful use, regardless whether unintentional or intentional during the operation or maintenance of the device, are excluded from the warranty. There are no user-serviceable parts inside a Swordfish laminator. Unauthorized repair or attempts to service the unit will invalidate the warranty.

For service of the unit under warranty, please return your Swordfish laminator with proof of purchase to your dealer or contact Swordfish customer service. In the event of returning the machine under warranty, suitable packaging must be used. Insufficient packaging resulting in damage will invalidate the warranty.




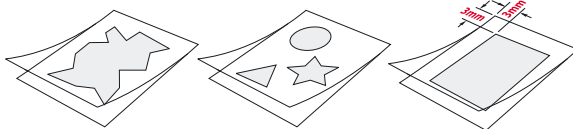
Pouch Thickness Options
(12575 mic. 5-3mil)



Please read this manual completely before using your laminator as incorrect use can cause serious damage. Failure to follow the instructions in this manual could invalidate your warranty!

Quick Start Guide

- 1** Position the laminator on a suitable flat surface, within easy reach of a 13Amp socket, ensuring that there is sufficient space behind the machine for the laminations to lay flat.
- 2** Connect the laminator to the 13Amp socket and press the isolating switch on the back of the machine to the "on" position. The "cold" and "ready" lights will illuminate and the machine will start running in cold lamination mode. It can be used for cold lamination immediately.
- 3** Press the **Select** button on the control panel to set the temperature, depending on the pouch thickness which you are about to laminate and the machine will run and start warming up. Note that setting the temperature too high can cause your pouch to jam!
- 4** When the appropriate temperature is reached, the "ready" light will stop flashing and turn green. Laminating can now begin.
- 5** Insert the document into a pouch of the right size. Leave approximately 2-3mm on each side of the pouch
- 6**  You must use a pouch carrier if you intend to laminate any of the following:
 - Multiple items within a single pouch
 - Irregular shaped items
 - Soft material such as newspaper, tissue, paper and fabrics
 - Any item that leaves a border of more than a 3mm around its edges



Pouch carriers are available from your usual pouch supplier.

- 7** If the lamination is imperfect, adjust the temperature to correct the fault – see page 9.
- 8** Before turning off the machine, press the Select button to put the machine in cold lamination mode by pressing the Select Button. The "cold" light will illuminate. Allow the laminator to run for 5 minutes before turning off the power. This will allow the rollers to cool evenly.

To get the best results from your laminator and extend its working life, please turn to page 6.

Getting Started

The Swordfish SuperFast Laminator is a real timesaver. The versatile machine is equipped with sophisticated temperature control, four precision rollers and rapid warm-up time and laminating speed – all of which combine to give perfect laminations.

- 1** Position the laminator on a level surface, close to a 13Amp socket.

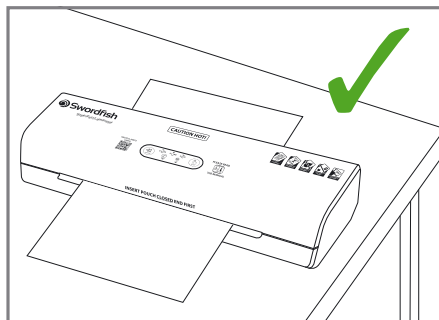
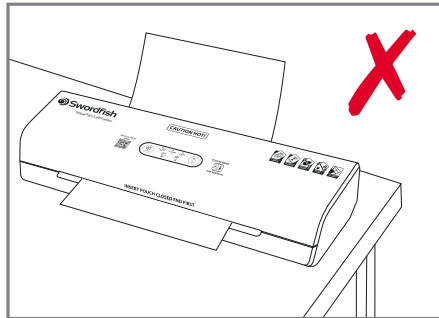


CAUTION

Do not locate the laminator:

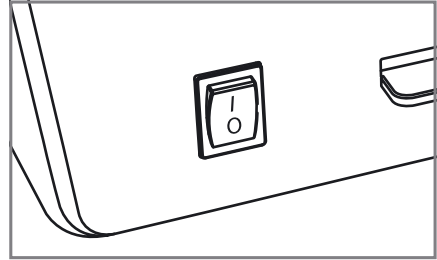
- Near any heat appliances such as heater or stove
- Directly exposed to sunlight
- Close to an air-conditioning unit
- In a poor ventilated environment
- On an irregular or inclined surface

- 2** Allow enough space behind the laminator for your laminations to lay flat whilst cooling. Do not cover the machine or place anything on top of it.



Operation

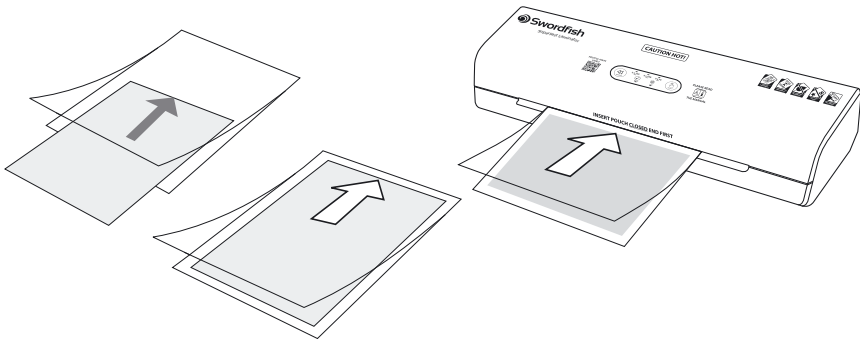
1 Connect the laminator to a 13Amp socket and press the isolating switch on the back of the machine to the "on" position. The "cold" and "ready" lights will illuminate and the machine will start running in cold lamination mode. It can be used for cold lamination immediately.



CAUTION
Do not leave the laminator unattended during lamination.

2 Set the desired temperature by pressing the Select button on the control panel, depending on the pouch thickness which you are about to laminate. The machine will run and start warming up. Once the pouch thickness has been selected, the 'READY' light will start flashing red. When the desired temperature has been reached, "READY" will stop flashing and turn green. Laminating can now begin.

3 Prepare the item to be laminated. Insert the item to be laminated into a pouch of the correct size and push it right into the sealed end of the pouch. The pouch could jam if the sealed end is not filled. Always insert the pouch into the laminator sealed end first.



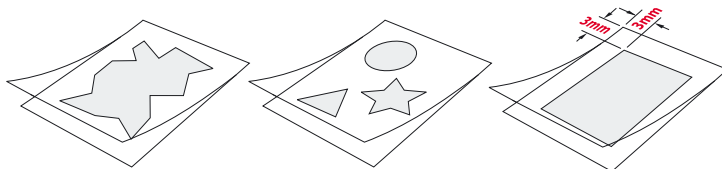
CAUTION
Do not laminate multiple pouches.
Always laminate one pouch at a time.

4

**CAUTION**

Lamination pouches are designed for use with full A4, A3, A2 etc. documents. If you wish to laminate non-standard items that do not support the pouch across its entire area, you must use a carrier or there is a real risk that the pouch will jam. Typical instances where a carrier must be used include:

- Multiple items within a single pouch
- Irregular shaped items
- Soft material such as newspaper, tissue, paper and fabrics
- Any item that leaves a border of more than a 3mm around its edges

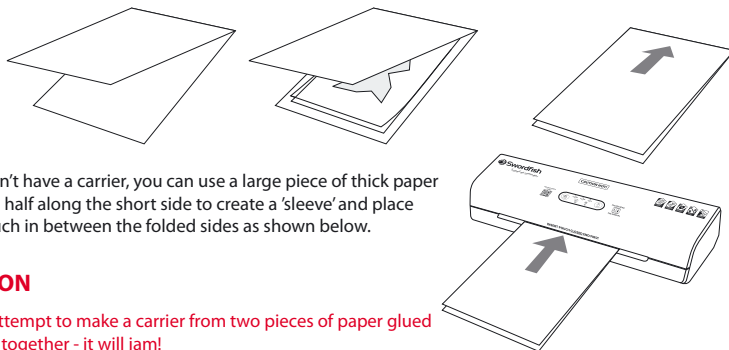


Failure to use a carrier in such cases could cause the pouch to jam. Carriers are available from your usual pouch supplier.

A cardboard carrier will absorb some of the heat so you may need to adjust the temperature settings accordingly.

Swordfish Armoured pouch carriers are made from PTFE-coated micro-fine woven fibreglass and will require little or no temperature adjustment.

Note that the maximum thickness of carrier + pouch + contents **MUST NOT EXCEED 0.6mm**.

**TIP**

If you don't have a carrier, you can use a large piece of thick paper folded in half along the short side to create a 'sleeve' and place your pouch in between the folded sides as shown below.

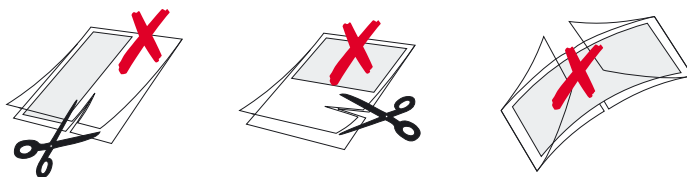
CAUTION

Do not attempt to make a carrier from two pieces of paper glued or taped together - it will jam!

If you cut the lamination pouch before lamination, you must use a carrier. This will prevent adhesive being deposited on the rollers.

Do not use 2 lamination pouches as shown below. It will jam the laminator.

The lamination pouch comes in two sheets with one edge sealed. Do not attempt to laminate a single side of the lamination pouch. The pouch will stick to the laminator roller.



5 The laminated item will be transported out of the laminator automatically.

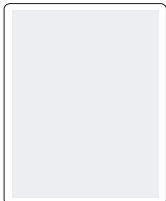
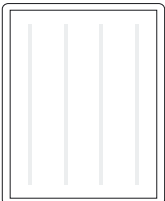
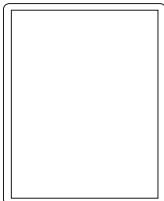



CAUTION

- Do not try to pull the pouch out by force. This may result in creases or curves in the laminated item and may damage the laminator.
- Remove the laminated item and lay it flat.
- The laminated item will be hot. Please handle it with care.

TIPS

If the correct settings are not chosen, the following lamination results may appear. Adjust the setting and try again.

<p>White spots</p>  <p>Insufficient heat. Increase the temperature a little.</p>	<p>Vertical spots</p>  <p>Insufficient heat. Increase the temperature a little.</p>	<p>Clear & smooth</p>  <p>Setting is correct.</p>	<p>Horizontal ripples</p>  <p>Too hot! Risk of jamming! Decrease the temperature.</p>
---	--	--	---

6  **IMPORTANT** Never attempt to laminate the following items:

- Leaves or other organic material – moisture will be boiled out, potentially ruining the lamination, damaging the electronics in the machine and creating risk of electric shock.
- Wax crayon drawings – the wax will melt, destroying the drawing. Molten wax could be extruded into the machine and cause extensive damage.
- Documents printed on thermal paper or Polaroid-type instant photos – the images will disappear.
- Any item that is creased or which has irregular thickness – it could cause a jam or damage the rollers.
- Artwork assembled with glue or incorporating glitter-glue. The glue will melt and run into the laminator.
- Any item that is not heat-resistant.

7 Before turning off the machine, press the Select button to put the machine in cold lamination mode. The “cold” light will illuminate. Allow the laminator to run for 5 minutes before turning off the power. This will allow the rollers to cool evenly.



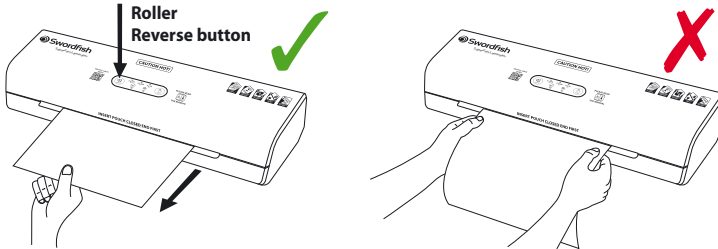
CAUTION

If the laminator is not going to be used for a long time, unplug it from the power socket.

8 To save power, this machine will automatically switch off after 30 minutes. When this happens, all the LEDs will flash and you will hear 3 beeps. To resume operation, use the on/off switch to turn off the machine for 3 secs and then turn it on again.

Essential Information

- Never insert a pouch until the previous lamination has been removed from the machine. Failure to do so could cause a jam.
- The maximum capacity of this machine (pouch + contents) is 0.6mm.
- Should a miss-feed or jam occur, press the "reverse button" to eject the pouch. The rollers will reverse direction and the pouch will be ejected through the entry slot. Do not use force to pull the pouch from the machine as this could cause serious damage.



Cold Lamination

The majority of lamination is done using pouches that are coated with adhesive that melts at high temperature. However, pouches coated with pressure-activated adhesive - so-called cold lamination pouches - are also available.

If you wish to use cold lamination pouches, the isolating switch on the back of the machine to the "on" position. The "cold" and "ready" lights will illuminate and the machine will start running in cold lamination mode. It can be used for cold lamination immediately. If the machine is still warm from previous hot lamination, "READY" will flash in the control panel while the rollers cool down.

Maintenance

Cleaning the laminator

After laminating several documents, adhesive material from the pouch may accumulate inside the laminator. Please clean the laminator regularly as follows:

- 1 Turn on the laminator until the READY light glows.
- 2 Fold a sheet of fresh A3 copy paper once in the middle and insert a piece of A4 card to the folded end of the copy paper. Pass through the laminator with the folded end inserted first. Repeat the procedure 3-5 times.

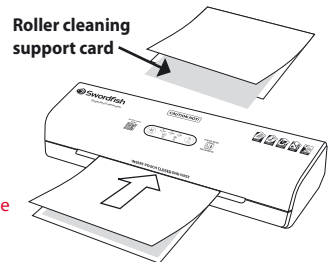


CAUTION

Do not use printed paper or the toner on the paper will melt in the heat of the laminator and may cause laminator malfunction.

Do not insert copy paper without first folding it around a card for support.

Do not reverse the lamination during this process - the paper will jam!



Cleaning

The outer case of the machine may be wiped clean with a moist cloth. Do not allow water to spill inside the laminator – risk of electric shock.



IMPORTANT

Do not use aerosol cleaners – or any other aerosol product – on, or near, this machine (or any other electrical appliance) as the propellant may be flammable.

Troubleshooting

The READY light does not glow when the laminator is turned on.

Please ensure that the plug is firmly inserted into the power socket. Check that the isolating switch on the back of the machine is in the “on” position.

White spots or cloudy areas appear on the lamination.

The temperature of the machine is too low – the adhesive inside the pouch has not melted completely. Either use a thinner pouch or raise the temperature – by small increments – until perfect results are achieved.

The lamination is creased, rippled or wavy.

The temperature of the laminator is too high. Decrease the temperature or use a thicker pouch.

The edges of the pouch are wavy.

If a number of smaller pouches have previously been laminated, the temperature of the rollers will be uneven. Allow the machine to run for a few minutes so that the temperature can stabilise.

If a pouch becomes jammed in the laminator.

Press and hold the “reverse” button. Pull the pouch gently, if necessary, but do not use excessive force as this could damage the laminator mechanism. If the jammed pouch cannot be removed, turn the laminator off immediately and contact your retailer for assistance. **Do not attempt to dismantle the laminator as this will invalidate your warranty and expose you to the risk of burn injuries and electric shock.**

The laminator shuts down after about 30 mins of inactivity.

This is normal. To restart, toggle the on/off button.



To get the best results from your laminator and to avoid common lamination problems, scan this code with your smartphone.

Have you seen the rest of the Swordfish range?

Pencil Sharpeners



The Triple



Pointi



VariPoint

Paper Shredders



800XC



1200XXCD

Paper Trimmers



SlimLine Series A4, A3



Elite Series A3/A2

To find out more information on the full range of products, visit us at www.snopakebrands.com

