

Have you seen the rest of the  
Swordfish range?

Pencil Sharpeners



The Triple



Pointi



VariPoint

Paper Shredders



800XC



1200XXCD

Paper Trimmers



A3/A4  
SlimLine



A3 Ellipse-500

 **Swordfish**  
TimeSaver<sup>2</sup> A3  
4-roller Laminator  
For Home & Small Office Use



Scan this QR code to view a helpful  
lamination hints video



To download or view these instructions  
in other languages scan this QR code  
or visit [www.snopakebrands.com](http://www.snopakebrands.com)

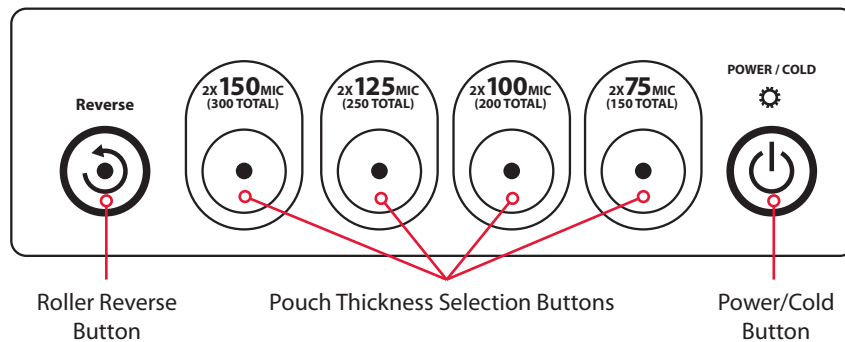
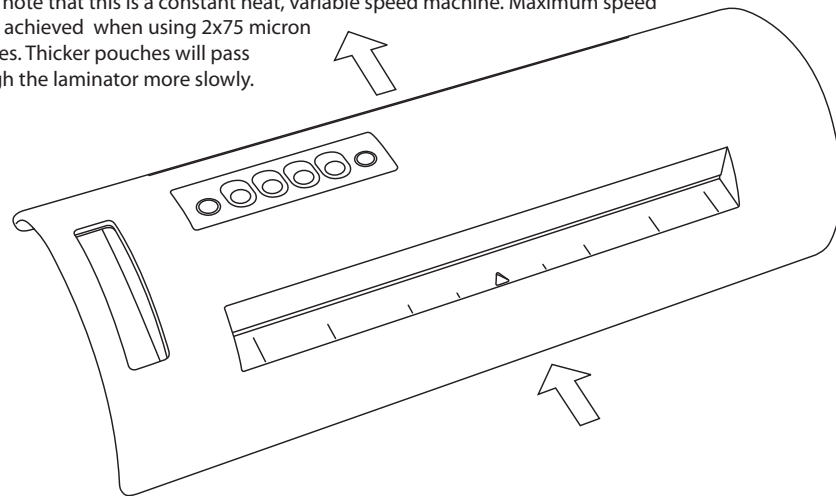
To find out more information on the full range of products,  
visit us at [www.snopakebrands.com](http://www.snopakebrands.com)



## Introduction

Thank you for purchasing this Swordfish TimeSaver<sup>2</sup> laminator. This is a very sophisticated, high precision machine, capable of delivering excellent results. In order to get the best use from it, and to avoid damage from misuse, please read these instructions carefully.

Please note that this is a constant heat, variable speed machine. Maximum speed will be achieved when using 2x75 micron pouches. Thicker pouches will pass through the laminator more slowly.



### IMPORTANT

Never attempt to laminate leaves, flowers or other organic material, wax crayon drawings, thermal paper, instant photographs or any material that is not heat-resistant.

If you intend to laminate irregular shapes, multiple items in one pouch, soft materials such as tissue paper or textiles, or any item that leaves a border of more than 3mm, you **must** use a carrier. Failure to do so could cause serious damage to your laminator. Damage so caused will **not** be covered by warranty. Carriers are available from your pouch supplier.

## Maintenance cont.

### Cleaning the body

- 1 Unplug the laminator.
- 2 Use a soft towel to dry wipe the laminator. If the dirt is difficult to remove, moisten a towel in water with neutral detergent and then wipe clean the dirt. Please do not use chemical solvents.

## Troubleshooting

The POWER light does not glow when the laminator is turned on.

**Please make sure the plug is properly plugged into the power socket.**

The pouch cannot be laminated.

**Please check the thickness of the lamination pouch. The total thickness cannot exceed 0.8mm.**

The pouch cannot be laminated thoroughly, white spots appear on the pouch.

**The temperature of the laminator is too low. Select a setting for thicker pouch.**

The pouch becomes creased and wavy.

**The temperature of the laminator is too high. Select a setting for thinner pouch.**

The sides of the pouch are wavy.

**Did you laminate a large number of small pouches? Wait for 2 minutes and laminate again.**

The pouch is jammed inside the laminator.

**Press the Roller Reverse button and pull out the pouch gently. If the jammed pouch cannot be removed, turn off the laminator immediately and contact your retailer for assistance.**

The laminator shuts down after about 10 mins of inactivity.

**This is normal. To restart, toggle the on/off button.**

**Should problems persist, please contact your supplier for assistance.**

## ⚠ Essential Information cont.

- **Always insert the sealed end first.**
- Do not laminate an empty pouch. The pouch will jam and damage the laminator.
- When laminating several documents consecutively, wait until the previous pouch has been removed from the laminator before inserting the new pouch. Otherwise it may jam and damage the laminator.
- To prolong the life of your laminator, we recommend that you switch off the machine for 30 minutes, as follows:
  - When using 2x75 micron pouches, switch off after 4 hours continuous operation.
  - When using 2x100 micron pouches, switch off after 3 hours of continuous operation.
  - When using 2x125 micron pouches, switch off after 2 hours of continuous operation.
  - When using 2x150 micron pouches, switch off after 1 hour of continuous operation.
- Do not use the laminator for any purpose other than lamination.
- Lamination is permanent and cannot be reversed. Do not laminate items of value such as bank notes.
- Do not laminate items which are heat sensitive such as thermal paper, facsimile paper, tickets, magnetic cards such as telephone or credit cards, wax crayon drawings, instant photos or any other non-heat-resistant material.
- Do not laminate sharp objects or any object which is thicker than 0.8mm.
- Do not laminate any item that is curly, creased, folded or has irregular thickness. The item may jam the laminator and cause malfunction.
- Do not laminate any item that is wet. Liquid may cause damage to the laminator, electric shock or fire.

⚠ **If you need to laminate multiple items, small items or irregular shapes, you must use a carrier** (see page 7).

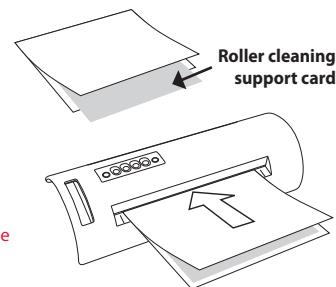
## Maintenance

### Cleaning the laminator

After laminating several documents, adhesive material from the pouch may accumulate inside the laminator. Please clean the laminator regularly as follows:

**1** Turn on the laminator until the READY light glows.

**2** Fold a sheet of fresh A3 copy paper once in the middle and insert a piece of A4 card to the folded end of the copy paper. Pass through the laminator with the folded end inserted first. Repeat the procedure 3-5 times.




### ⚠ CAUTION

Do not use printed paper or the toner on the paper will melt in the heat of the laminator and may cause laminator malfunction.

Do not insert copy paper without first folding it around a card for support.

Do not reverse the lamination during this process - the paper will jam!

## SPECIFICATIONS

Suitability	 Home & Small Office
What makes it special?	Swift warm-up, fast lamination
Swordfish UK Product Code	40315
Maximum Paper Size	A3
Colour	Black/Silver-Grey
Feed Entry Width (mm)	335mm
Maximum Pouch Thickness	2 x 150 [300] Microns
Maximum Pouch Thickness Total (mm)	0.8mm
Jam Release	✓
Reverse Control	✓
Cold Lamination Option	✓
Auto Switch Off	✓ After 10 minutes
Number of Rollers	4
Warm-up Time (minutes)*	Approx 1 minute 30 seconds
Speed (time to laminate an A4 sheet)	Approx 34 seconds (2x75 microns)
Maximum Speed	Variable, max 610mm/minute (for 2x75 microns)
Product Dimensions H x W x D (mm)	90 x 495 x 185
Weight (kg)	3.6kg
Product Warranty (years)	2 years

\*Based on using a 2x75 micron pouch.

# Safety Precautions

Failure to comply with any of the following safety precautions could result in serious injury, fire or electric shock.



This equipment is not intended for use by children. It is not a toy.



Unauthorised attempts at repair will invalidate the warranty.



Do not allow water, or damp media, to enter the laminator.



Do not cover the laminator, or place anything on it. Risk of fire!



Disconnect after use or when cleaning the laminator.



The laminator is hot and contains hazardous moving parts.



Do not operate the laminator on, or near, combustible objects.



Do not allow clothing or jewellery to enter the laminator. Risk of fire or electric shock!

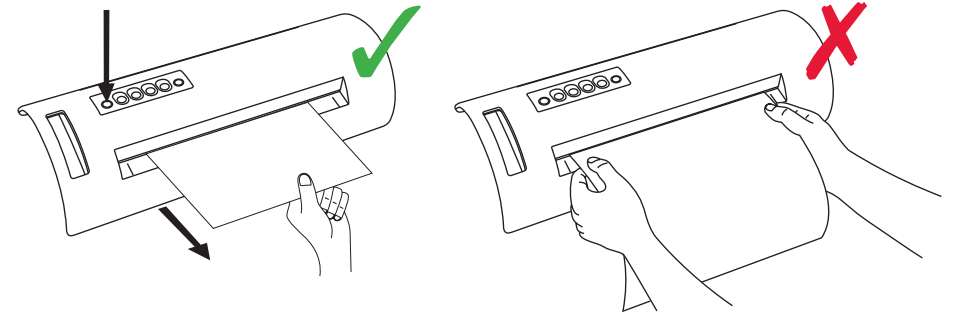


Do not leave the laminator unattended during operation.

# Anti-Jam Function

- If a pouch becomes misaligned or jammed, press the reverse button. The rollers will reverse direction and the pouch will be ejected through the entry slot. **Do not use force to pull the pouch from the machine as this could cause serious damage.**

Roller Reverse button

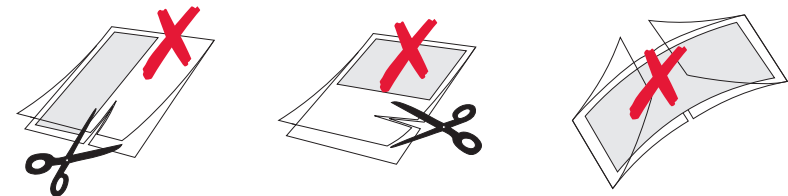


- To resume operation, press the reverse button again.
- If a jammed pouch cannot be removed, turn off the laminator and seek assistance from your supplier. Do not attempt to open the machine as this will invalidate your warranty.

# ⚠ Essential Information!

Please pay attention to the following when operating the laminator.

- If you cut the lamination pouch before lamination, you must use a carrier. This will prevent adhesive being deposited on the rollers.
- Do not use 2 lamination pouches as shown below. It will jam the laminator.



- The lamination pouch comes in two sheets with one edge sealed. Do not attempt to laminate a single side of the lamination pouch. The pouch will stick to the laminator roller.

## Operation cont.

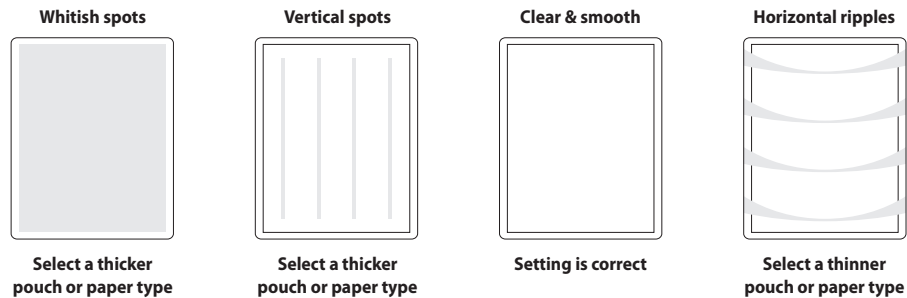
**8** The laminated item will be transported out of the laminator automatically.

### CAUTION

- Do not try to pull the pouch out by force. This may result in creases or curves in the laminated item and may damage the laminator.
- Remove the laminated pouch from the output slot.
- The laminated pouch will be hot. Please handle with care. Cool it down on a flat surface.

### TIPS

If the correct settings are not chosen, the following lamination results may appear. Adjust the setting and try again.



### WARNING

If you have laminated a large quantity of small pouches (eg. A4, A6, card size), please wait for 2 minutes before you laminate a large pouch (ie. card size - A6, A5 - A4 or A4 - A3). The temperature on both sides of the roller will be high and may affect the lamination quality.

**9** After use, press the power button to turn the laminator off. The LEDs will go out but the motor will continue to run for two minutes while the machine performs its cooling down routine. The triangular indicator will flash red during this cooling sequence. Do not unplug the laminator until the motor has stopped running.



### NOTE

In order to save energy, your TimeSaver<sup>2</sup> laminator will go into switch off mode after 10 minutes of inactivity. It will sound three beeps to alert the operator and the triangular indicator will turn red. Press the power button to restart the machine.

### CAUTION

If the laminator is not going to be used for a long time, unplug it from the power socket.

## Getting Started

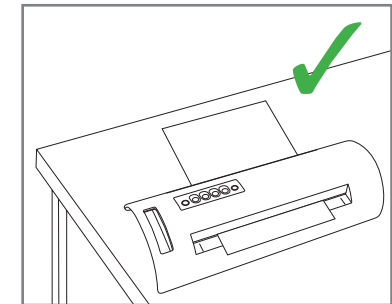
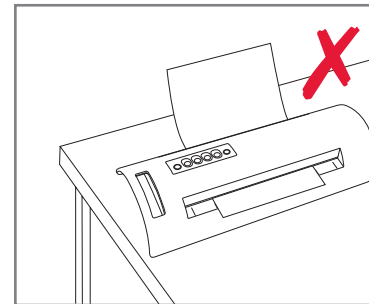
**1** Unpack your laminator. Dispose of the packaging responsibly.

**2** Decide where to locate the laminator.

### CAUTION

- Do not locate the laminator:
- Near any heat appliances such as a heater or stove
  - Directly exposed to sunlight
  - In front of an air conditioner
  - In a poor ventilated environment
  - On a uneven surface

**3** Allow enough clearance behind the laminator. Make sure that the pouch coming out of the laminator is not impeded.



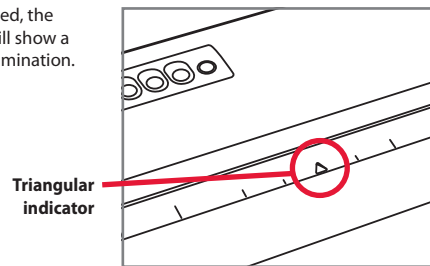
## Operation

**1** Insert the plug into a power socket. The LED indicators will all flash once and the machine will emit a single beep, to confirm that it is connected.

**2** Press the power button. The LED indicator in the button will illuminate, the motor will start and the triangular indicator by the entry slot will flash red. After a few seconds, the triangular LED indicator will turn green and the laminator will beep twice. The machine is now ready for cold lamination.

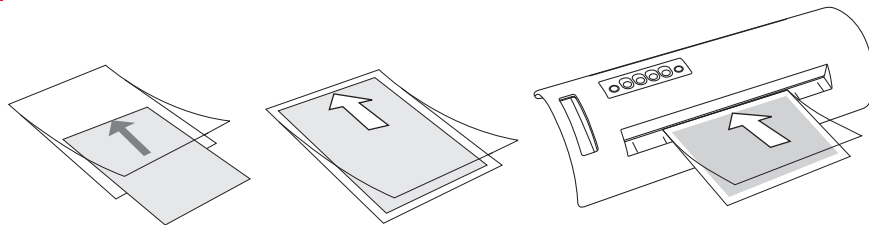
**3** For hot lamination, press the button that corresponds with the thickness of pouch that you are using. The LED in the button will turn green and the triangular LED indicator will turn red and flash.

**4** When the correct working temperature has been reached, the machine will beep twice and the triangular indicator will show a steady green light. The machine is now ready for hot lamination.



**5** When changing from one pouch thickness to another, press the appropriate button and almost instantly the laminator will be ready - no waiting for the machine to warm up or cool down.

**6** Prepare the item to be laminated. Insert the item in the lamination pouch and push it right into the sealed end of the pouch.



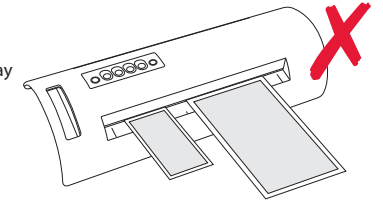
## Operation cont.

**7** Insert the sealed end of the pouch straight into the laminator through the entry slot. Once the pouch is engaged by the rollers, it will be fed into the laminator automatically.



### CAUTION

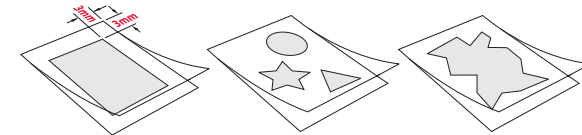
- Always feed the pouch into the laminator in the middle of the slot. Feeding the pouch at the side of the inlet may lead to malfunction.
- Do not laminate multiple pouches. Always laminate one pouch at a time.



### IMPORTANT

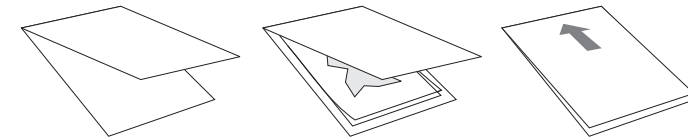
Never attempt to laminate leaves, flowers or other organic material, wax crayon drawings, thermal paper, instant photographs or any material that is not heat-resistant.

If you intend to laminate irregular shapes, multiple items in one pouch, soft materials such as tissue paper or textiles, or any item that leaves a border of more than 3mm, you **must** use a carrier. Failure to do so could cause serious damage to your laminator. Damage so caused will **not** be covered by warranty. Carriers are available from your pouch supplier.



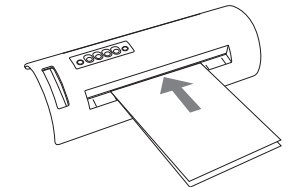
A carrier will absorb some of the heat, so you may need to adjust the settings accordingly.

Note that the maximum thickness of carrier + pouch + contents **MUST NOT EXCEED 0.8mm**.



### TIP

If you don't have a carrier, you can use a large piece of thick paper folded in half along the short side to create a 'sleeve' and place your pouch in between the folded sides as shown below.



### CAUTION

Do not attempt to make a carrier from two pieces of paper glued or taped together - it will jam!